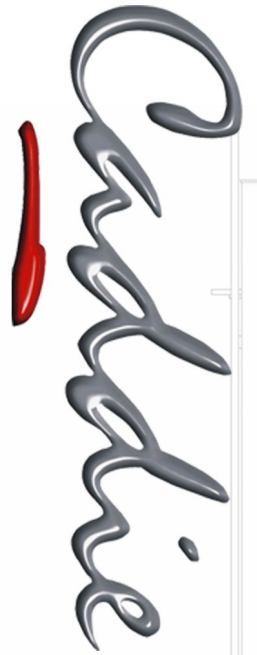


Product Information



Introduction to Caddie	2
Functionality	3
Architectural Applications	4
Digital Terrain Modelling	6
VIO Photorealistic Rendering	7
Testimonial - Allister Godfrey RIBA	8
Testimonial - Maurice Stainer	11
Caddie Prices	13
Caddie Maintenance	14
Caddie Training	15
Caddie Features & Benefits	16

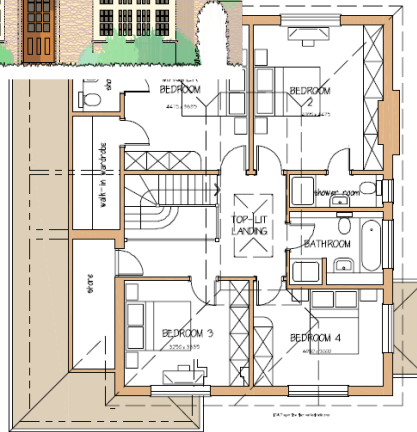
'Design The Way You Think'



Image by kind permission of
Graham Rix RIBA



**Caddie* is compatible with
Windows 7®, Windows 8®
Windows 8.1®
and Windows 10®**



FIRST FLOOR PLAN OF HOUSE 3

Originally designed by an Architect, Caddie began its life in 1985 as one of the first Computer Aided Design packages for the new and relatively inexpensive PC platform. By providing users with traditional drawing and presentation methods, such as construction lines and pen weights, Caddie redefined how CAD systems worked, making it possible for everyone to draw, even those with no prior computing experience.

Today, Caddie remains true to its original goal, helping you realise your designs quickly, simply, and without compromise. Whether you need a 2D sketch, or a fully interactive AEC model, with Caddie you can be drawing faster than you do now, in less than a week.

Whatever your drawing background, with a choice of on-screen icons, keyboard shortcuts, or simple point and select, context menus, Caddie lets you choose a way of working that suits you, to make drawing and modelling fun.

Caddie makes sharing information easy too by using the industry standard 'DWG' file format. No need to import or convert your files, just load and save your drawings for seamless compatibility.

And when you need that little extra bit of help and advice, your Caddie licence comes with 12 months telephone, remote assisted support and web-link support built-in, keeping you working effectively, and producing the drawings you need.

If you like to keep abreast of the latest in CAD developments, you will be pleased to know that your Caddie licence also comes with 12 months software

updates included. With regular alerts and updates via the web, you can download and use the latest productivity tools within minutes of them becoming available.

You can extend your 12 months Caddie maintenance period too. Extending your maintenance after the first 12 months and you continue to get all the benefits of ongoing support for your Caddie. In addition you get regular software updates from our user led development programme, so you never need to buy another CAD package ever again.

With regular discipline specific training sessions available, you can get expert tuition in producing the type of drawings you need; so if you need to draw walls, doors and windows, that's what we teach you. And with a thriving user community offering regular workshops hosted by the Caddie development team, you can network with your fellow professionals to pick up the latest industry tips at the same time you hone your CAD skills.

So find out what Caddie can do for you.

Call on +44 (0)1234 834920

or email sales@caddiesoftware.com.

to tell us what you want from your CAD system, and we'll help you get the tools you need to work more effectively.

Derek Bretherton
Managing Director

*References to Windows® compatibility are for the current version of Caddie



Advanced Computer Solutions Limited

Eliot Park Innovation Centre, 4 Barling Way, Nuneaton, Warwickshire, CV10 7RH

Tel: 00 44 (0)1234 834920

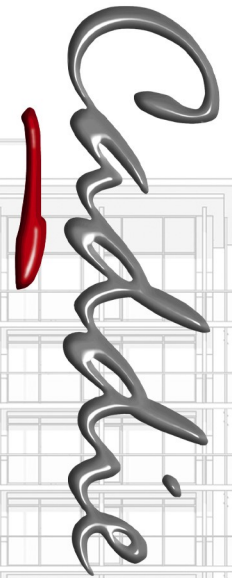
Email: sales@caddiesoftware.com Web www.caddiesoftware.com

Caddie

Computer Aided Design for Professionals

Introduction

Tools Available in Caddie Professional



If your work involves [architecture](#), [steelwork](#), [surveying](#), [terrain modelling](#), [civil engineering](#), [mechanical](#), or [landscaping](#) Caddie Professional is your perfect CAD solution, providing a range of dedicated application tools, designed to save you time (see accompanying specialist application sheets) For an overview of the general drawing and modelling tools you get with Caddie, see below;

General features

Multiple layers (un-limited) - object orientated, command nesting - use one command within another, get functions - parameter matching of drawing elements, user definable keyboard macros, Blocks with Block Editing facility, external reference symbols - edit one symbol and all identical ones will change, multiple scales on one drawing if required, metric and imperial units, global edit, property matching via Clone tool, pattern naming and attributes, pattern count and Block scheduling, splines, explode to entities (text, hatch, leader, dimension, spline). Multiple drawings.

Lines

Single, multiple, orthogonal, orthogonal angle, vertical, horizontal, vector, parallel, parallel multiple, sketch, rectangle, polygon, polyline.

Circles & Arcs

Radius centre point, radius origin, radius through two points, radius tangential to two elements, radius tangential to element through point, through point tangential to two elements, through two points tangential to element, centre point and point on edge, through three points, tangential to three elements, parallel, parallel multiple, ellipse, spiral. Arcs positive, negative, angle, radius two points, three point by end or centre, multiple tangential. Multi-arc/circle tool.

Construction Lines

Vertical, horizontal, through two points, parallel point, parallel, parallel multiple, through point normal to line, normal through middle of line, bisect angle, through a point normal to a circle, tangent to a circle, at specific angle, tangent to two circles, reference angle.

Construction Circles

Radius centre point, radius origin, radius tangential to two elements, radius through two points, radius through point tangential to element, through point tangential to two elements, through two points tangential to element, centre point and point on edge, through three points, tangential to three elements, parallel, parallel multiple, parallel point, radial.

Display Functions

Zoom in, zoom out, zoom box, zoom last, zoom scale, zoom extents, zoom store, zoom recall, zoom sector, pan, dynamic panning and zooming.

Drawing Exchange

AutoCAD DWG and DXF(3D)

Hatch

Associative & Vectorised RGB flood fill, gradient fill, scalable, islands, editable, multi layer.

Measure

Diagonal, vertical, horizontal, X-Y, Radius, Diameter, Angle, Area, Perimeter, Angle between two lines, Angle between two points.

Dimensions

Dimension Styles for easier editing, Associative - diagonal, vertical, horizontal, X-Y, radius, diameter, angle, chamfer, tolerance, auto-dimensioning.

Transformations

Move, rotate, mirror, scale (proportional and non-proportional)- element, group of elements, pattern, group of patterns, layer, group of layers, pen, linestyle, pen & linestyle, polyline, block, polygon, stretch - block, polygon, matrix copy, repeat, detail copy, scale to fit, fit pattern.

Delete

Element, block or polygon (inside, outside, clipped, non clipped), marked, pattern, reference symbol, leader arrow, hatch, text, dimension, layer, point, spline, construction circle, construction line, last element, segment, all construction, all, oops - undelete.

Text

Enter directly or via an editor. Edit, move, delete, multiple fonts including TrueType, Text Styles for easier editing and greater visual continuity, infinite 'real unit' sizing, leader arrows, external ASCII file read, automatic numeric incrementing, global rescaling, right, left, centre alignment.

Raster

ecw, jpeg2000, jpg, BMP & TIFF images, cut and paste, translate, vector to raster, rotate, scale, invert, mirror and image clipping.

Viewports

Multiple configurable Model Space Viewports. Layout Sheet (Paper Space) Viewports, multiple, rectangular, circular, custom, scaleable, auto detailing, viewport layer functions, moveable, scalable, automatic scale dependant Relevant Detailing within Viewports.

Drawing Layout

Multiple sheets, mixed size sheets, mixed orientation of sheets, different pen styles by sheet and / or viewport.

Object Selection

All, by pattern, object, rectangle, polygon, marking, layer and Quick Selection, Pen Type & Colour:

3D Tools

Elevation views, 3D orbit within commands, UCS manipulation with store and recall, 3D primitives and solids of revolution, Freeform planes with tilt and punch options, Extrude 2D drawings, Surface textures including images and transparency.

Computer Aided Design for Professionals

Functionality

*References to Windows® compatibility are for the current version of Caddie



Advanced Computer Solutions Limited

Eliot Park Innovation Centre, 4 Barling Way, Nuneaton, Warwickshire, CV10 7RH

Tel: 00 44 (0)1234 834920

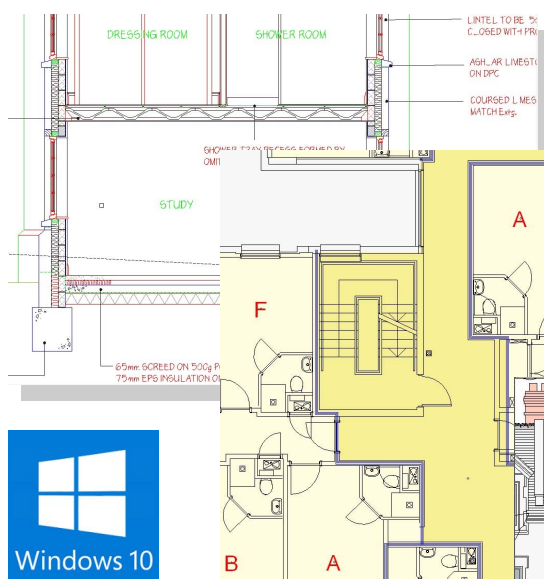
Email: sales@caddiesoftware.com Web www.caddiesoftware.com

Architectural Applications

With a range of specialist applications covering all aspects of the construction industry, Caddie Professional provides a total solution for the architectural designer

Caddie Architectural

Caddie Architectural provides you with the tools you need to make the most of the time you get to design. Whether you want to create a 3D building model, viewing your design from every conceivable angle, or simply produce a set of plans, sections and elevations in a fraction of the time it would take to draw line-by-line, Caddie Architectural makes it easy to produce the drawings you need to satisfy clients, planners and building control.



Caddie also supports DXF and DWF as well as allowing you to create PDF files for submission under the Planning Portal.

Architect, Allister Godfrey RIBA explains why his Caddie software is so vital to the success of his design led Chartered Practice

'Caddie has given me the leverage to stand out from the crowd in terms of the quality of the drawings I can produce.

Planning drawings are clear and legible, and portray the level of professionalism that I strive to attain.

Construction drawings are achieved with the minimum of fuss and are instantly available in the DWG format to other professionals in the design team which also saves time and money.'

Caddie Architectural is included as standard with Caddie Professional and is covered by 12 months software support and software updates

Caddie Architectural provides you with:

Industry standard DWG drawing format

When you draw and model using Caddie you can be secure in the knowledge that you are working in the industry standard DWG drawing format that makes sharing drawings and information easy. No need to import and export, simply load and save your files for seamless compatibility without losing information or changing your drawings, whether working with fellow Caddie users or professionals using other DWG based CAD systems. In addition to DWG, Caddie also supports DXF and other formats making it easy to incorporate Ordnance Survey information

and manufacturer's details within your drawings, as well as keeping your clients up to date with your latest schemes

AEC modelling tools

Produce a complete 3D model of your design in less time than it takes to draw out a 2D plan

Country specific content

Caddie AEC provides you with an out of the box solution to modelling your designs in 3D without the need to spend days or weeks configuring the walls, doors and windows for the way you build

Parametric modelling for maximum flexibility

Create and amend your designs without the need to redraw, update wall constructions on-the-fly, add,

Computer Aided Design for Professionals

Applications

*References to Windows® compatibility are for the current version of Caddie



Advanced Computer Solutions Limited

Eliot Park Innovation Centre, 4 Barling Way, Nuneaton, Warwickshire, CV10 7RH

Tel: 00 44 (0)1234 834920

Email: sales@caddiesoftware.com Web www.caddiesoftware.com

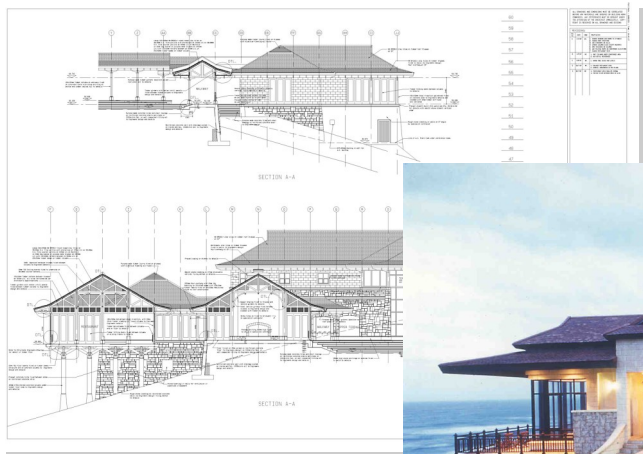
Architectural Applications

...Continued

Caddie

Computer Aided Design for Professionals

Applications



remove and alter doors, windows and openings and watch your model update automatically.

Automatic roof generation

Define the pitch, overhang and eaves then add a roof to your building with just 2 clicks, adding gables, hips and bonnet hips to create the roof design you need in seconds

Add 3D Stairs to your designs

Stairs can prove to be one of the trickiest aspects of any design, but with Caddie's AEC stair designer you can add straight, spiral, U-shaped and multi-landing stairs to your building models quickly and easily. Choose the type of stair you want, indicate its position and be rewarded with a full parametric 3D stair to view, section and amend as you please

Generate plans, sections and elevations of your designs automatically

Draw out your building using Caddie's AEC tools then create the floor plans, sections and elevations automatically, and if you amend your design, simply hit the regenerate and watch them update

Comprehensive array of architectural tools for when you only want 2D

You may prefer to work in 2D for speed and simplicity so Caddie Professional includes a comprehensive array of architectural plan, section and elevation tools to make working in 2D much quicker too

Walls, doors and windows

Save time by drawing solid and cavity walls that come pre-hatched, inserting doors and windows of any size automatically without the need to trim, and create stud walls instantly without the need to copy or array

Floor joist layouts

Create floor joist layouts in just seconds

Building Grids

Create regular and irregular grids for accurate setting out

Section tools

Draw sections through your buildings quickly and easily from 2D drawings using Caddie's section tools including walls, windows, roofs, floors and staircases and portal frames

Elevation Wizard

Create automatic elevations from 2D plans, hatched and ready to print

Elevational features tools

Add detail to your elevations with Caddie's brick arch and soldier tools

Artistic Tools for 'Hand-finishing' drawings

Create drawings that reflect the character of your designs and your own presentation, including Artistic tools to provide that 'hand-drawn' look

Automatic scheduling

Schedule doors, windows, areas and volumes from your drawings at the click of a mouse or pen

Electrical and fire annotation

Create electrical and fire layout drawings with automatic scheduling

Triangulation tools

Plot surveys of irregular buildings quickly and easily with Caddie's triangulation tools

Comprehensive Caddie symbol and Block Libraries

Choose from a comprehensive range of pre-drawn symbols including people, trees, cars, sanitary ware and many more for professional looking drawings.

References to Windows compatibility are for the current version of Caddie



Advanced Computer Solutions Limited

Eliot Park Innovation Centre, 4 Barling Way, Nuneaton, Warwickshire, CV10 7RH

Tel: 00 44 (0)1234 834920

Email: sales@caddiesoftware.com Web www.caddiesoftware.com

Digital Terrain Modelling

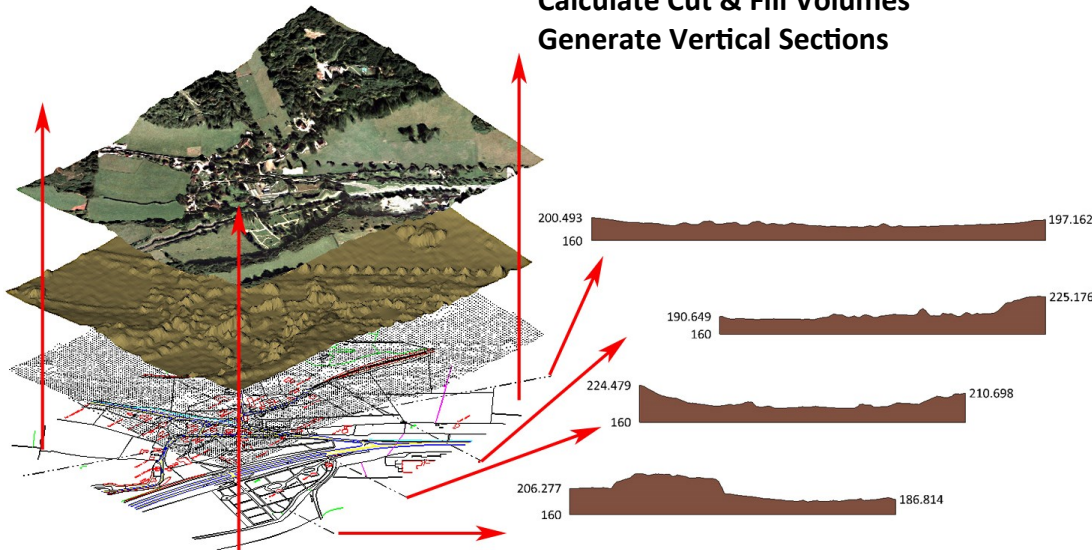
Produce A 3D Terrain Model From A 2D Site Drawing - IN Minutes, NOT Hours



Caddie

Not only that, you can easily:

**Create Contours
Calculate Cut & Fill Volumes
Generate Vertical Sections**



Caddie's Digital Terrain Modelling Application has been specifically designed to address the problems faced by designers when dealing with uneven, contoured and sloping sites. Problems brought about by the need to both visualise these sites and the challenges they offer, and to describe them in the form of drawings and three-dimensional models, as quickly, easily and accurately as possible.

With direct input and conversion of data minimizing transcription and plotting errors, Caddie saves time and reduces the risk of human error.

Providing:

- Direct input of Total Station drawings from site surveyors and mapping providers such as Promap® using 'DWG' (Caddie's native drawing format) and 'DXF' to form base drawings.
- Import of spreadsheet, text file and GPS data along with conversion and plotting as grid-coordinates to define site features and boundaries.
- Insertion of photographs and direct download from satellite web sites such as Google Earth® for montage compositions and enhanced contextual presentation.
- Automatic generation of point heights from 2D survey drawings to illustrate 3D site features
- Automatic creation of 3D TIN (Triangular Irregular Network) from 3D points to model the site surface and provide form to the raw survey spot heights.
- Automatic generation of site contours with height labelling to provide a 2D representation of 3D site make-up.
- Automated level adjustment of 3D site models to provide the basis of site modifications.
- Automated optimisation of cut and fill operations, with in-built factoring for soil type, to help reduce transport of material to and from site and minimize environmental impact.
- Automatic site section generation complete with reference heights and datum marker to allow for more effective evaluation and utilization of a site's natural terrain.
- Conversion of 3D TIN models to 3D Meshes for enhanced rendering and smoothing of the site topography.

*References to Windows® compatibility are for the current version of Caddie

Computer Aided Design for Professionals

Applications



Advanced Computer Solutions Limited
Eliot Park Innovation Centre, 4 Barling Way, Nuneaton, Warwickshire, CV10 7RH
Tel: 00 44 (0)1234 834920
Email: sales@caddiesoftware.com Web www.caddiesoftware.com

VIO Photorealistic Rendering

Live Material Textures and High quality rendering



Choose Caddie 'VIO' to view, design, and render your schemes using life-like material textures. Get live and instant feedback on your material choices to develop and inform your designs, then create stunning photo-realistic visualisations of your schemes to sell your ideas to clients and planners alike.

Based around the latest rendering engine from Sheffield based Lightwork Design, market leaders in rendering technology with over 2.5 million installations worldwide, Caddie 'VIO' makes producing high quality visualisations and renders easy.

Using Caddie's familiar and easy to use interface, 'VIO' offers users all the tools they need to produce convincing renders of their models without the over-complexity sometimes encountered in other packages. Complexity that can leave users unable to produce the results they want in the time they have available.

Once enabled, Caddie 'VIO' operates as part of Caddie, rather than being an external rendering engine, which provides the versatility and flexibility needed when altering and amending your designs that only a fully integrated solution can provide.

Caddie 'VIO' gives you access to literally thousands of textures to provide you with physically accurate depictions of real world materials,

For sensitive sites where material matching is critical, Caddie 'VIO' also lets you create your own materials and textures to include within your renders. Photograph your chosen material with a digital camera, cut out and save a repeating section as a tile in a image editing program, then incorporate it as a new material in Caddie 'VIO' and apply it to your building.

To make your models 'come-alive' Caddie VIO has a all the lighting tools you'll need. Lighting is based on true to life representations of natural and artificial lighting.

With precise global positioning for your models for correct shadow-casts, Caddie 'VIO' also provides an easy to use solution to creating sun studies of your designs. You can even include background and foreground images within renders to heighten the sense of reality by placing models directly into a street scene.

Caddie 'VIO' comes with 12 months support and software updates, so even those new to Caddie can get all the help they need to start producing high quality renders with Caddie 'VIO'.

- *Not available in Caddie Budget*



Computer Aided Design for Professionals

Applications

*References to Windows® compatibility are for the current version of Caddie



Advanced Computer Solutions Limited

Eliot Park Innovation Centre, 4 Barling Way, Nuneaton, Warwickshire, CV10 7RH

Tel: 00 44 (0)1234 834920

Email: sales@caddiesoftware.com Web www.caddiesoftware.com

Caddie Professional

An Architect's View

Architect, Allister Godfrey RIBA explains why his Caddie software is so vital to the success of his design led Chartered Practice specialising in residential design

Allister Godfrey RIBA

Architect in Chalgrove Oxfordshire



Q What kind of problems or frustrations were you having before you bought Caddie?

A Having used Caddie since version 5.32 it is a long and distant memory, but for the most part the frustrations I had with another CAD package was the limitations of each command; one would have to use the same command over and over to achieve very simple things. Caddie's toolset had always had a more extensive yet simple toolset that allowed greater flexibility in doing simple things. Also I remember the delight in discovering Caddie allowed me to produce drawings that were much more akin to the drawings that I was used to producing on the drawing board. It far outstripped the 'mechanical' look of drawings from other packages.

Q Why did you choose Caddie over the alternatives?

A Caddie also allows me to design on screen; whilst I still undertake 'napkin' sketches for initial concepts, I can quickly draft outlines of a project for further consideration and if necessary sketching over on a hard copy for further designing. Being an unobtrusive part of my workflow in this manner is one of Caddie's biggest strengths.

In recent years the reason for sticking with Caddie is that it has always had the presentation advantage over anything else out there, the sheer ease and speed with which I can produce good looking and legible planning and construction drawings outweighs that with which can be achieved with other packages.

Q In what ways do you feel that you made the right decision?

A I think 'proof is in the pudding' ... the positive comments I get back from potential clients who see my work for the first time through to indirect comments I get back from clients from other professionals are testimony; I recently received favourable comments from a new client via a planning officer. The planning officer had remarked to my client that I was a good architect and this was

helped by the standard of the presentation drawings he had received from other projects.

I also get a lot of repeat work from certain clients, obviously pleased with the quality of work obtained from my practice.

Q What type of projects do you work on and what advantages are there for you in using Caddie?

A For the most part my workload is in the residential sector from small home improvements (loft conversions, extensions etc.) right through to multi million pound one-off houses.

Some of the sites I have been working on in recent years could be considered as tricky in planning terms. This has involved the contextualisation of the project into the site with a high degree of realism, whilst being efficient with my time and ultimately cost to my clients. Being able to supply drawings which anchor the proposed building within a site context is very easy, and gives Local Authorities the confidence to approve potentially difficult schemes knowing that the resultant project will be comfortable in its setting. I find this particularly relevant with some of the more contemporary projects I have worked on recently.

Q What benefits do you feel Caddie has brought to your

'Caddie has always had the presentation advantage over anything else out there'

'Caddie allowed me to produce drawings that were much more akin to the drawings that I was used to producing on the drawing board'

Computer Aided Design for Professionals

Testimonial



Advanced Computer Solutions Limited

Eliot Park Innovation Centre, 4 Barling Way, Nuneaton, Warwickshire, CV10 7RH

Tel: 00 44 (0)1234 834920

Email: sales@caddiesoftware.com Web www.caddiesoftware.com

Caddie Professional

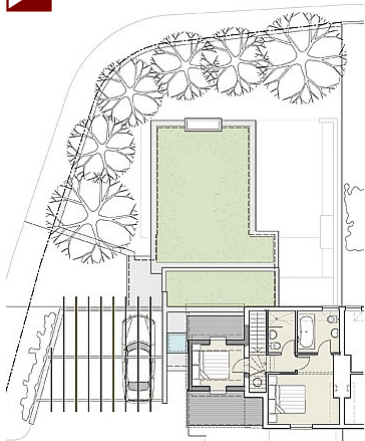
An Architect's View

...Continued

Architect, Allister Godfrey RIBA explains why his Caddie software is so vital to the success of his design led Chartered Practice specialising in residential design

Allister Godfrey RIBA

Architect in Chalgrove Oxfordshire



ple; twice, three, four times as quick?

A Compared to my experience with a previous CAD package I would say I am at least 50% faster in achieving the same drawing. But even within the different versions of Caddie, say the difference between v.9 and the upcoming v.14 I am drawing quicker - I would say that productivity has increased by 25% just in this area alone.

life and business?

A Caddie has given me the leverage to stand out from the crowd in terms of the quality of the drawings I can produce. Planning drawings are clear and legible, and portray the level of professionalism that I strive to attain.

Construction drawings are achieved with the minimum of fuss and are instantly available in the .dwg format to other professionals in the design team which also saves time and money.

Also editing drawings is quick and painless; nobody likes re-doing work so the ability to be able to stretch a building both in plan and elevation with a few clicks without having to redraw anything is invaluable.

Q How much quicker are you with Caddie than your old method of drawing? For exam-

Also the newer versions of Caddie have allowed me to do much more drawing for the same amount of time allotted

for previous projects. By this I mean I can provide a much higher standard of work for the same fee as before. This can equate to the difference between providing a fully coloured set of drawings versus a more traditional black and white set of drawings. This again keeps me one step ahead of the competition and is an important factor in winning work.

Q How would you describe the support you get for your Caddie software and how do you feel you benefit from this support?

A It's great to know that any problem you have with Caddie can be answered, for the most part immediately, by pick-

ing up the phone and calling ACS. Having someone on the end of the telephone that can give you an answer, regardless of how trivial the issue is, is a great comfort, especially when tight deadlines are looming! If a problem cannot be sorted over the phone, then emailing a drawing to the support team and getting a response or a fix for the problem is mostly sorted out within a day or two

Q How many staff do you think using Caddie saves you?

A As a sole practitioner this is difficult to answer. I like to think I can do the work of two people in pure drawing terms.

Q How much time and money do you think using Caddie saves you?

A If I am doing the work of two people, then Caddie obviously saves me the costs of employing that additional member of staff, it is such a difficult thing to quantify ... I do have an example I can use ...

This week I have been working on a set of drawings I produced with Caddie 9 about two years ago. In reworking the drawings I have noticed a number of little things which I take for granted now; I now have the general arrangement drawings in one file, rather than them being spread across several files; large plans can

'I would say I am at least 50% faster in achieving the same drawing'

'Caddie has given me the leverage to stand out from the crowd in terms of the quality of the drawings I can produce'

Computer Aided Design for Professionals

Testimonial



Advanced Computer Solutions Limited

Eliot Park Innovation Centre, 4 Barling Way, Nuneaton, Warwickshire, CV10 7RH

Tel: 00 44 (0)1234 834920

Email: sales@caddiesoftware.com Web www.caddiesoftware.com

Caddie Professional

An Architect's View

...Continued

Architect, Allister Godfrey RIBA explains why his Caddie software is so vital to the success of his design led Chartered Practice specialising in residential design

Allister Godfrey RIBA

Architect in Chalgrove Oxfordshire



be split across several sheets. The use of blocks speeds drawing editing immeasurably, as does the use of polylines. All of these little elements all add up to time, and therefore, money saving at the end of the day.

Q How is Caddie different from the alternatives, and what do you see as Caddie's major strengths?

A For me Caddie's major strength has always been that the drawings I produce are done so intuitively and in a similar manner to that undertaken on a drawing board. I spent the first 8 years of my working life as a technician, learning my craft on a drawing board; my transition to CAD from the drawing board during my first year out of university, was exciting but involved a lot of frustration. It wasn't until I started using Caddie that I realised how much of my presentation

and time spent producing drawings was governed by the limitations of the software I was using at the time. The speedy transition to Caddie 8 years ago allowed me

to reintroduce all the techniques I used to use in hand drawings back into my workflow, and then in recent years developing those techniques to the next logical step.

A good example is hatching in Caddie; in my hand drawing days

I used to use a lot of coloured self adhesive film of the back of tracing paper for elements like ground lines, window shading and shadowing on elevations. Caddie replicates this methodology by

allowing a user to just draw a hatch by picking points in a similar manner to laying a sheet of film and cutting out with a scalpel. Other packages I have had experience of do not allow such a direct method for achieving the same result, and therefore you do not feel inclined to do this kind of work because it is so laborious!

Also, it is evident that Caddie's development is very much driven by its users and feedback from

users is taken on board and often implemented and **enhanced** from the original proposal. For me this generates tremendous loyalty to the product.

Q Why would you keep using Caddie?

A As long as it still retains its user driven development and core principles of ease of use then you will have to pry the product from my cold dying hands ;o)

Q Any other comments

A Do you want me to keep going?

'Caddie's development is very much driven by its users'

'As long as it still retains its user driven development and core principles of ease of use then you will have to pry the product from my cold dying hands'

Computer Aided Design for Professionals

Testimonial



Advanced Computer Solutions Limited

Eliot Park Innovation Centre, 4 Barling Way, Nuneaton, Warwickshire, CV10 7RH

Tel: 00 44 (0)1234 834920

Email: sales@caddiesoftware.com Web www.caddiesoftware.com

Caddie Professional

Maurice Stainer explains why he's glad he left his drawing board for Caddie

After spending 30 years on a drawing board, making the move to Caddie has made him enjoy drawing once again

Maurice Stainer of Maurice Stainer Associates Poole in Dorset



front elevation 1:100

Q Could you describe for us the nature of your practice / business and the type of projects you work on?

A A small architectural/planning consultants practice dealing with predominantly residential work with a small amount of commercial work. Projects range from home extensions to small housing developments and flats.

Q What advantages are there for you in using Caddie, and what benefits do you feel Caddie has brought to your life and business?

A Mainly speed and quality of presentation. The majority of my "competitors" are working with CAD and it has become the standard that Planning Offices and Committees now expect. Caddie has improved

tracing sheets to destruction with numerous changes by awkward Clients.

Q What kind of problems or frustrations were you having before you bought Caddie?

A Just that I felt that I was getting left behind and needed to drag myself into the 21st Century!

Q Why did you choose Caddie over the alternatives?

A Primarily the fact that it was architecturally specific and had many short cuts that relate directly to my everyday work. My research had revealed that many of the alternatives were very complex and had functions that I would never ever use. Caddie is simple to use once you get tuned in and I actually approach my drawing in a very

similar way that I would have with a pencil and pen.

similar way that I would have with a pencil and pen.

Q In what ways do you feel that you made the right decision?

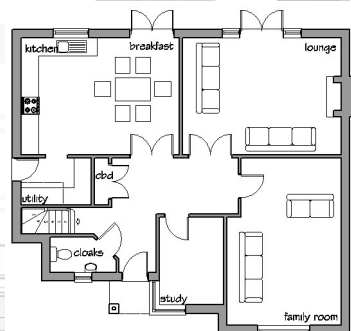
A From a professional and business point of view, probably the best decision I ever made.

Q How would you describe the support you get for your Caddie software and how do feel you benefit from this support?

A The support is excellent and I certainly would not have climbed the steep learning curve (for me personally) without it. Just a shame that I nearly drove poor Tony to a nervous breakdown! I am sure he misses me now.

'No more sketches and timely re-draws and razor-blading tracing sheets to destruction'

'Caddie has improved my efficiency and methods of working. I now enjoy drawing again'



ground floor plan 1:100

Computer Aided Design for Professionals

Testimonial



Advanced Computer Solutions Limited

Eliot Park Innovation Centre, 4 Barling Way, Nuneaton, Warwickshire, CV10 7RH

Tel: 00 44 (0)1234 834920

Email: sales@caddiesoftware.com Web www.caddiesoftware.com

Caddie Professional

Maurice Stainer explains why he's glad he left his drawing board for Caddie

...Continued

After spending 30 years on a drawing board, making the move to Caddie has made him enjoy drawing once again

Maurice Stainer of Maurice Stainer Associates Poole in Dorset



Q How much quicker are you with Caddie than your old method of drawing?

A Definitely at least 3 times quicker. I would never have believed that when I started because I am a quick draughtsman. Not only is it quicker to draw but the time is really made up by the ease of making changes and amendments.

Q How many staff do you think using Caddie saves you?

A One

Q How much time and money do you think using Caddie saves you?

A Difficult to quantify exactly, but time is money and I definitely save lots of time and work very efficiently.

Q How is Caddie different from the alternatives, and what do you see as Caddie's major strengths?

A I would refer you to why I chose Caddie over alternative systems. It is architecturally specific with many shortcuts that relate directly to my everyday work; and is simple to use in a way that lets me approach my drawing in a very similar way that I would have with a pencil and pen.

Q Why would you keep using Caddie?

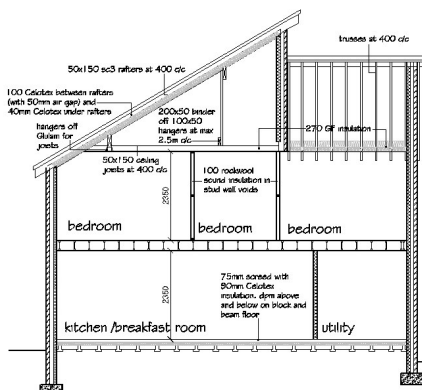
A I am so comfortable with using it and each work I learn a little something that I didn't know I could do (normally by accident!)

'Definitely at least 3 times quicker. I would never have believed that when I started because I am a quick draughtsman'

Q Is there anything you would like to add?

A I must have been one of your worst pupils on the training course because I had so little computer skills. I must admit that after a week back in the office I was all for giving up and reaching for my Rotrings. But I stuck at it and with Tony's support on the end of the telephone I quickly got to grips with

it. The first week I probably rang him twice a day, second week once a day and by the end of the month once a week. I have been using Caddie for about 18 months now and probably haven't needed support for at least a year. I am a Caddie convert and would gladly recommend the system to any prospective user.



Computer Aided Design for Professionals

Testimonial



Advanced Computer Solutions Limited

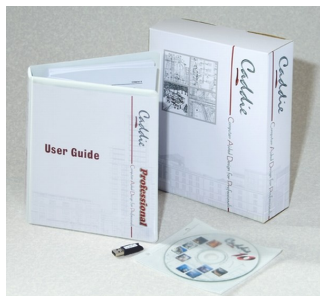
Eliot Park Innovation Centre, 4 Barling Way, Nuneaton, Warwickshire, CV10 7RH

Tel: 00 44 (0)1234 834920

Email: sales@caddiesoftware.com Web www.caddiesoftware.com

Caddie Prices

Caddie Professional more than just a CAD System



Caddie* is compatible with Windows 7®, Windows 8, 8.1® and Windows 10® 32 and 64-bit.

Caddie Professional comes complete with the following applications.

Architectural Applications...

Whether you need to make better use of your time by speeding up the drawing of your plans, sections and elevations; or would rather model your designs to realise your ideas in three dimensions, producing automatic sections, Caddie provides you with perfect solution. And with everything from walls to dormer windows, roofs to steelwork, and stairs to automatic scheduling, Caddie Professional makes producing, editing, and presenting your designs faster than ever.

Caddie DTM...

Produce 3D terrain models of your sites from 2D surveys or 3D point height data from the likes of Promap® in seconds. Level, section and contour sites automatically without spending hours projecting points, and drape images onto your site models to highlight site features. Caddie DTM even calculates volumes to make take-offs easy.

Civil Application...

gives you the tools to make plotting services, utilities, drainage and fences, quick and easy. The Civil Application will even plot vehicle turning paths to aid in the design of road layouts and service yards.

Survey Application...

makes light work of entering, interrogating and drafting survey information from site data and surveys, with tools for the creation of transition curves built in too.

Steel Application...

includes the BS steel sections, simply select the profile and weight then place in your drawing; as well as steel staircases and trusses.

Mechanical Application

with a broad range of mechanical engineering symbols such as machining levels and datum, Caddie Mechanical helps you draw everything from nuts and bolts to pipes and diodes.

Landscape Application

Create landscaping schemes for trees, shrubs, perennials and climbers and produce automatic schedules with costing of specimen items and planting areas and mixtures

All Caddie Software includes 12 months telephone support and software updates.

Caddie Professional (1st Seat)	£1,995
Caddie Professional (additional)	£1,495
Caddie VIO (Rendering)	£500

Also available:

Caddie Budget	£695
Caddie Educational (Single Licence)	£70

Buy [on-line](#)

Caddie Educational (Multiple Network Licence)

Contact Advanced Computer Solutions Ltd. For Multi User Educational Network Licence Prices.

Hardware

Advanced Computer Solutions can also provide you with hardware to meet your own needs and specifications, from complete packages to individual computers, workstations, printers and peripherals. Order your computer from ACS and it will be delivered to you, pre-installed with Windows 10®, Caddie and any other software you order, so you can simply plug it in and start working.

Computers

And because we think you would rather be working than wrestling with computers, the machines we supply you with are Hewlett Packard® specified and built Business Machines, renowned for their build quality, reliability and prompt after sales support. Entry level computers come complete with a 1 years parts and labour, on-site warranty. Workstations come with a 3 years parts, labour and on-site warranty.

Typical Workstation specification:*

HP Based Workstation with Intel i7 Processor, ATI or NVIDIA Graphics. 1 TB Hard Drive, 16GB memory, Windows 10® 64bit Operating System

Order your machine today and it will be delivered to you in around 10 working days.

Monitors

Monitors are typically 27" wide screen to suit clients requirements.

Printers & Peripherals

ACS can also supply you with printers, plotters, scanners and other peripherals to provide you with a total solution to your computing needs. Whether you know exactly what you need or are looking for help and advice, give us a call, and we'll help you tailor a package to meet your needs.

All prices exclusive of delivery & VAT

**References to Windows 8® and Windows 10® compatibility are for the current version of Caddie*

Advanced Computer Solutions Limited

Eliot Park Innovation Centre, 4 Barling Way, Nuneaton, Warwickshire, CV10 7RH

Tel: 00 44 (0)1234 834920

Email: sales@caddiesoftware.com Web www.caddiesoftware.com

Computer Aided Design for Professionals

Prices

Caddie Maintenance

Caddie is more than just a CAD system

Choosing a CAD system isn't just about the software. Yes, Caddie is a tremendously flexible and versatile system offering a comprehensive array of discipline related tools for Architecture, Civil and Mechanical Engineering, Surveying; all of which make drawing and modelling much quicker than ever before. But when you choose Caddie, you also get access to the outstanding **backup and support** service that will help make the transition to using Caddie easy. A support service that the **Caddie Maintenance** package allows you to tap into long after you first bought your Caddie software.

Total Peace of mind with the Caddie Maintenance Package

Caddie Maintenance provides you with the backup support you need to keep you working effectively, as well as the benefits of ongoing software development to provide you with all the latest productivity enhancing tools to make your time more productive.

Caddie Support.

Caddie users the world over appreciate the benefits that come with using Caddie every time they need assistance. Simply call the Helpline to get fast access to expert knowledge providing help with problem solving and maintain productivity. The Helpline can also help you with tips and guidance on using Caddie, providing advice related to your own projects to boost your proficiency. Caddie support comes with that personal touch too, so even new users needn't be afraid of asking those 'obvious' questions. Whether you need help with a specific problem, or would simply like to learn more about the tools that Caddie provides, the answers are only a phone call away.

Caddie Software Updates

As a designer you are constantly faced with new

"I'm not used to support like this - if more people realised how good it was they would also be using Caddie."

challenges, whether through developments in materials technology, methods of construction, or the increasing demands of clients and regulatory bodies. To ensure that you always have the tools you need to deal with these challenges, Caddie Maintenance can keep your Caddie software right up-to-date direct from the Caddie web site; letting you download the very latest enhancements to keep you working effectively and with maximum efficiency.

"What we needed was stability and 'DWG' compatibility. Caddie has provided both"

Caddie Open Day Support



With Caddie Maintenance you can also supplement your Caddie Training by taking advantage of the innovative Caddie Open Day Support Programme. This gives you the opportunity to spend a whole day working on your own projects alongside our experienced Caddie support staff. With help and advice, and tips for improving speed, efficiency and presentation readily available, you will have the perfect opportunity to develop your Caddie skills even further, making your time even more productive.

Caddie Maintenance is easy

Caddie Maintenance is available for all your Caddie software, whether you are using Caddie Professional, Caddie Budget or Caddie Educational. Caddie Licences purchased in the UK and Ireland already have 12 months Caddie Maintenance included, providing you with software updates and telephone support automatically for the first 12 months.

If maintenance is not already included with your software you can upgrade your Caddie to include 12 months maintenance for an introductory price of just £100 per licence at the time purchase of your software.

Can I get Caddie Maintenance after the first 12 months?

Yes.

Continuing your Caddie Maintenance couldn't be simpler. For **ONLY £300** per licence per year you can continue to enjoying the benefits provided by having the most **up-to-date Caddie software**, providing you with all the latest time saving tools. You will also have unlimited access to the **Caddie Helpline** to provide, quick **answers** to your questions, when you're stuck, and **tips and advice** to keep you working efficiently.

Computer Aided Design for Professionals

Maintenance

Caddie



Caddie Training

Whether you are new to Caddie, or wanting to develop your existing skills to increase your productivity even further, there is a course for you.

Effective training can help you make the most of both your software, and your time. With courses specifically designed to meet the skill needs of users head-on, you can be sure that you learn on your course are the things you need most when you are working back in your office.

And to make it easier for you to remember all the things you are taught on your course, we break down your training into a series of manageable exercises, with

"Learning Caddie is easy ..."

examples taken from real world situations to make learning easier. What's more, we keep class sizes to a minimum to make sure you get the attention you need during your training, and provide you with your own workstation throughout your course to get you off to the best possible start with Caddie, no matter what your prior knowledge or experience.

"Caddie is incredibly quick to use, and also most importantly it's very easy to learn, irrespective of your previous CAD experience"

Caddie Quick Start Course (3 day) £495*+

The perfect course for those new to Caddie, dealing with everything you need to know to get you drawing effectively, and all in just three days. This course begins by introducing you to the basic concepts and principles of drawing, teaching you how to use Caddie's flexible drafting tools to prepare surveys and create your own designs. You will learn how to make and edit blocks, incorporate hatches, colour fills, text, dimensions and even photographs within your drawings, all using simple to follow

"After doing the three day Quick Start Course I drew quicker on Caddie than on my AutoCAD®"

exercises. Once you have mastered the basics, we take you further into the system, showing you how to produce floor plans, detailed sections and elevations using Caddie's fantastically quick architectural tools. You will also learn how to arrange your drawings on your title sheets and print them.



Caddie 3D Modelling £305**

For those wishing to develop their ideas in three-dimensions, this course provides the ideal start. Learn how to create 3D models quickly and easily using Caddie's advanced 3D tools including AEC. How to convert your existing 2D drawings to 3D, even add life

"I have already won a job directly as a result of using Caddie's 3D. After seeing the model the client immediately gave me the project"

-like textures to your models to provide that extra sense of realism. And for when you need to go that extra mile, let us teach you how to create 'walkthroughs' to really sell your ideas.

Caddie VIO Rendering £305**

For those using the advance rendering engine, VIO, this course will not only give you all the fundamentals, but tips and techniques to bring your 3D models to life. You will also be instructed in the process of creating Sun Studies.

Caddie Advanced Course £305**

For all those familiar with the basics of drawing with Caddie, this course will prove itself to be an absolute

"The key to successful implementation is effective training"

• All prices are exclusive of VAT
+ Prices are based on training at our Nuneaton Support Centre and are for new or maintained users (for other prices please contact ACS).

Buy training [on-line](#)

Computer Aided Design for Professionals

Training



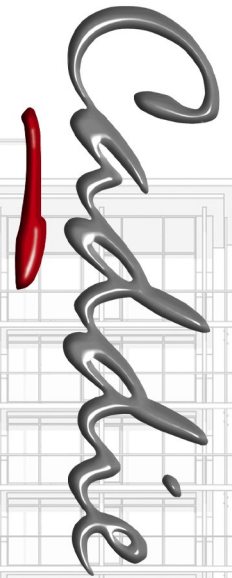
Advanced Computer Solutions Limited

Eliot Park Innovation Centre, 4 Barling Way, Nuneaton, Warwickshire, CV10 7RH

Tel: 00 44 (0)1234 834920

Email: sales@caddiesoftware.com Web www.caddiesoftware.com


Caddie Features & Benefits



Features & Benefits

Computer Aided Design for Professionals

The Features Caddie provides:

- ✓ Industry standard 'DWG' drawing format
- ✓ Caddie Compatibility with Windows 7[®], 8[®] and Windows 10[®] * 
- ✓ [Architectural](#), [Steelwork](#), [Surveying](#), [Civil](#), [Mechanical](#) & [Landscaping Tools](#)
- ✓ Insert photographs and images in your drawings
- ✓ Block creation, insertion and editing
- ✓ Opaques to mask areas of drawings
- ✓ Automatic Hatching with island creation and origin editing

The Benefits you see:

- Providing easy compatibility with fellow professionals, clients and manufacturers*
- Caddie* has passed Microsoft designed tests to minimize the possibility of crashes, hangs, and reboots, and ensures compatibility with Windows 8, both 32-bit and 64-bit editions.*
- Save time and increase productivity with Caddie's specialist tools*
- Save time creating location plans, street scenes, and illustrative details*
- Simplify drawings to improve efficiency; and make major alterations and amendments in a matter of seconds*
- Simply move objects around, hiding whatever's underneath. Brilliant for elevations, site and space planning*
- Save time hatching with automatic boundary recognition.*

Your Caddie software has revolutionised the way we work - we produce far better drawings much more quickly - should have changed years ago. 'Geoffrey Blumenthal

- ✓ RGB Hatch and Gradient Fills
- ✓ Artistic Tools for 'Hand' finishing drawings
- ✓ Model Space Viewports plus Multiple Sheets with scaled viewports of your model Space or Building Model
- ✓ Individual pen configurations for each Viewport
- ✓ Automatic scale sensitive detailing and Annotative Finishes
- ✓ 3D modelling, walkthroughs and live image textures

- Give your presentation that extra edge by adding colour to your drawings, Caddie even lets you fade and grade colours across your drawing*
- Create drawings that reflect your own character and style of presentation, including Artistic tools to provide that hand-drawn look*
- Reduce drawing time and minimize errors by creating and amending a single drawing model. Take the view you want at the scales you need and arrange them on your drawing sheets*
- Caddie banishes flat, lifeless CAD drawings forever by letting you choose an independent pen configuration for each of your chosen views. Choose thinner 'pens' for smaller scale work, thicker 'pens' for details, even add colour to some view and not others, and all on the same drawing sheet*
- Caddie's Relevant Detailing and Annotative Finishes enable you to choose the level of detail appropriate to the scale of each Viewport. Alter the Viewport scale and watch the level of detail change automatically*
- Don't limit your imagination, model your ideas in three dimensions, bringing your schemes to life. Walk through your designs complete with the textures and finishes you have chosen, bricks, tiles, wood, glass, even actual wallpaper, to add to the sense of realism*
- The easy to use menu structure coupled to powerful and intuitive context sensitive tool options make the change to Caddie easy and productive, saving you both time and money.*

- ✓ Simple to learn & easy to use

- ✓ Professional training & support

Training courses that teach you what you want to know as well as what you need to know, and in terms you can understand. With professional yet friendly support to get you working effectively

*References to Windows[®] compatibility are for the current version of Caddie



Advanced Computer Solutions Limited
 Eliot Park Innovation Centre, 4 Barling Way, Nuneaton, Warwickshire, CV10 7RH
 Tel: 00 44 (0)1234 834920
 Email: sales@caddiesoftware.com Web www.caddiesoftware.com